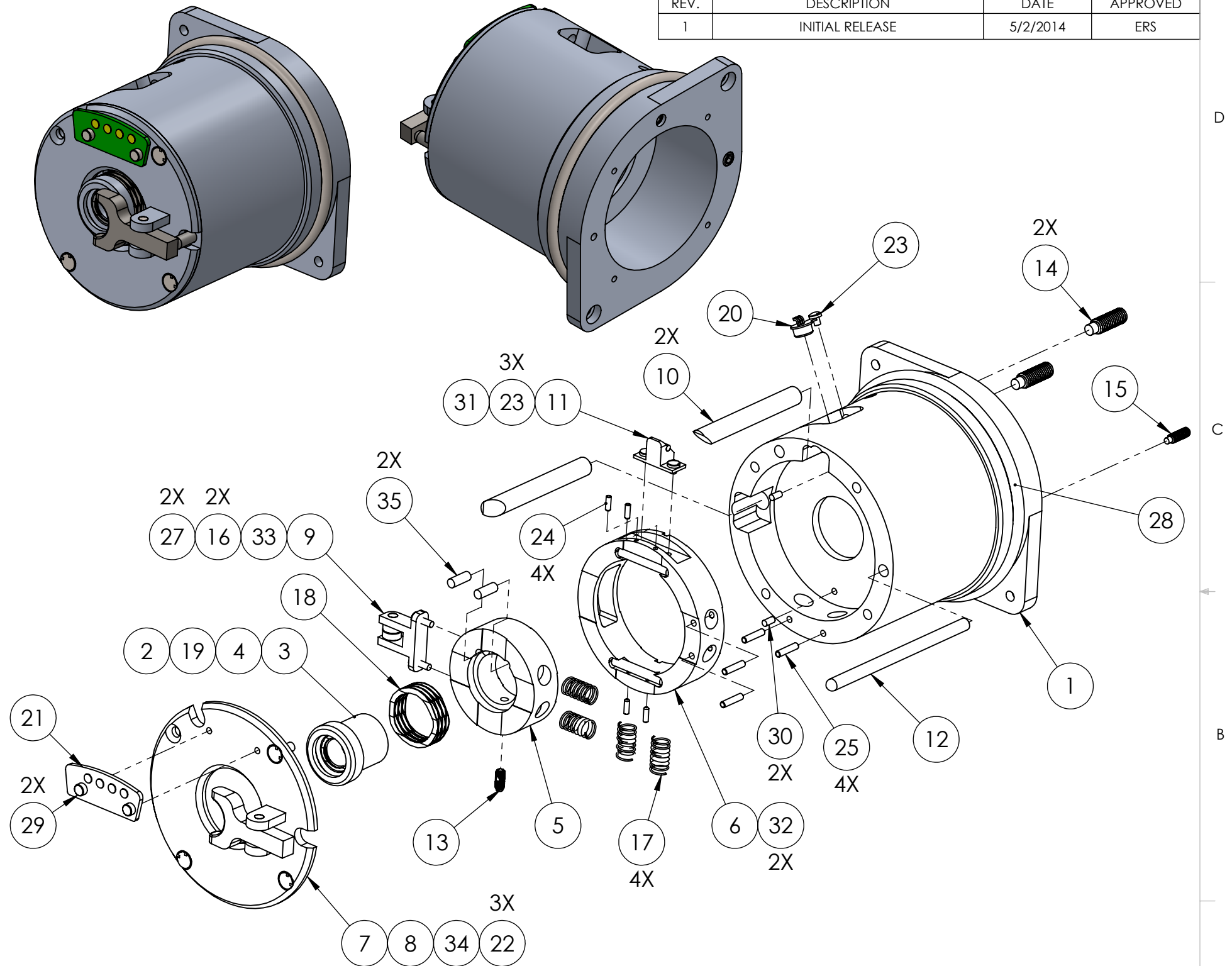


ITEM NO.	PART NUMBER	DESCRIPTION	QTY.
1	A45-003244	M12.5 Output Housing	1
2	A45-009912	M12.5 OD Collimating Lens	1
3	A45-001822	M12.5 Lens Housing	1
4	A45-004423	M12.5 Lens Collar	1
5	A45-006397	M12.5 Y Collar	1
6	A45-002299	M12.5 X Collar	1
7	A45-009000	Output Mech. Cover	1
8	A45-006765	M12.5 Focus Lever	1
9	A45-008787	Ball Bearing Bracket	1
10	A45-014466	XY Plunger	2
11	A45-012233	Y Wedge Bracket	1
12	A45-019945	F Plunger Rod	1
13	85015A311	M3 Ball Spring Plunger	1
14	92775A165	M5X16X0.8 Set Screw	2
15	92775A110	M3X10X0.5 Set Screw	1
16	7804K124	M6X3X2.5 Ball Bearing	2
17	LMC-00456	XY Spring	4
18	CM20-L5	Focus Spring Flat Wire	1
19	CM12-L1	M15 Flat Wire Spring	1
20	LP-9900345	Light Detector Sensor	1
21	B45-024566	PCB Conn 2	1
22	91585A123	M3 Flat Head Screw	3
23	92567A034	M2 Pan Head Screw	3
24	B18.3.6M - M1.6 x 0.35 x 5 Hex Socket Flat Pt. SS --N	M1.6 Flat Pt. Set Screw	4
25	91585A127	M2X10 Set Screw	4
26	91234A345	M15 Retaining Ring	1
27	91585A098	M2X6 Cross PHMS	2
28	J515353x0694H	M69 ID O-Ring	1
29	81585A002	M2X4 SHCS	2
30	91585A912	M2X4 Pin	2
31	93600A070	M2X6 Pin	1
32	93600A120	M3X20 Pin	2
33	93600A112	M3X10 Pin	1
34	93600A114	M3X12 Pin	1
35	93600A110	M3X8 Pin	2



REVISIONS			
REV.	DESCRIPTION	DATE	APPROVED
1	INITIAL RELEASE	5/2/2014	ERS

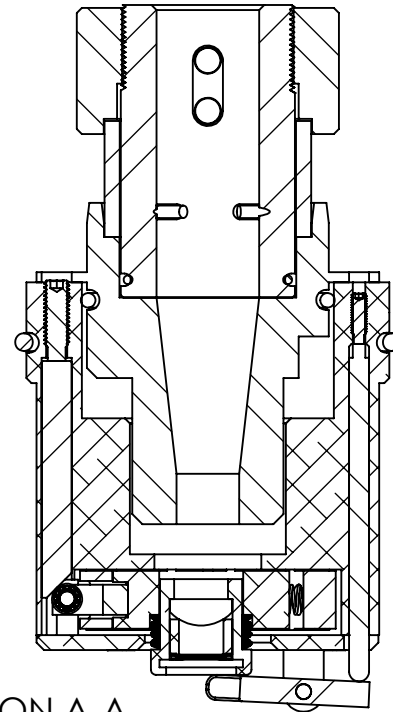
**PROPRIETARY AND CONFIDENTIAL**  
 THE INFORMATION CONTAINED IN THIS DRAWING IS THE SOLE PROPERTY OF <INSERT COMPANY NAME HERE>. ANY REPRODUCTION IN PART OR AS A WHOLE WITHOUT THE WRITTEN PERMISSION OF <INSERT COMPANY NAME HERE> IS PROHIBITED.

UNLESS OTHERWISE SPECIFIED:		NAME	DATE	<b>ESIERRA ENGINEERING</b>
DIMENSIONS ARE IN INCHES TOLERANCES: FRACTIONAL ± ANGULAR: MACH ± BEND ± TWO PLACE DECIMAL ±0.25 THREE PLACE DECIMAL ±0.12		DRAWN	nemona 4/16/14	
INTERPRET GEOMETRIC TOLERANCING PER:		CHECKED	mani 4/19/14	SIZE DWG. NO. REV <b>B A35-018823 1</b>
MATERIAL		ENG APPR.	ers 4/16/14	
FINISH		MFG APPR.	santana 4/17/14	
NEXT ASSY	USED ON	Q.A.	rafa 4/17/15	
APPLICATION	DO NOT SCALE DRAWING	COMMENTS:		

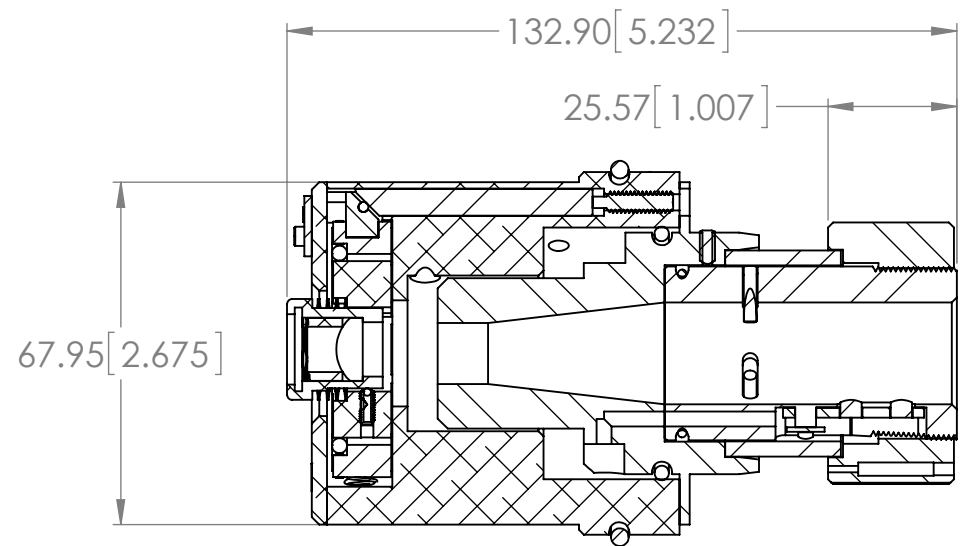
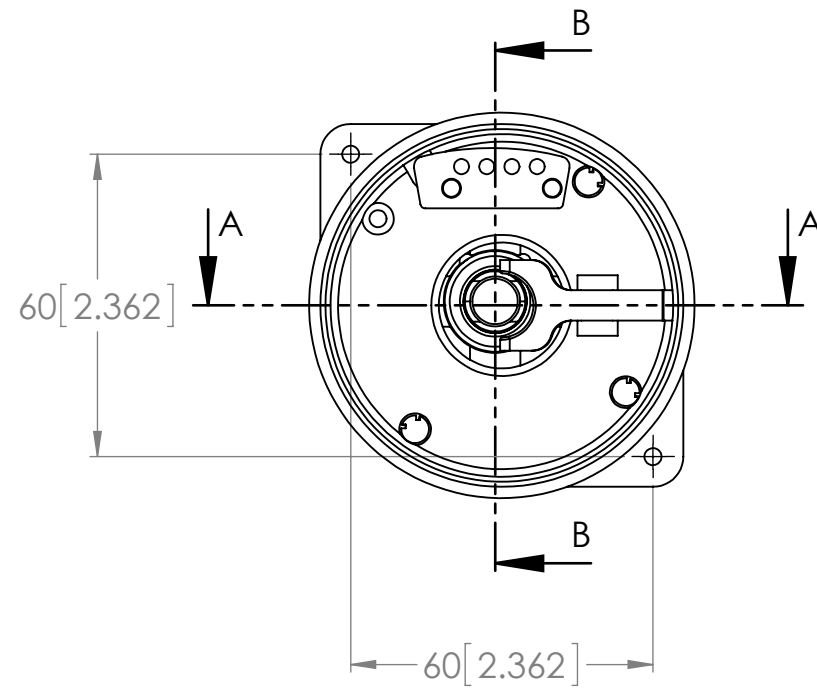
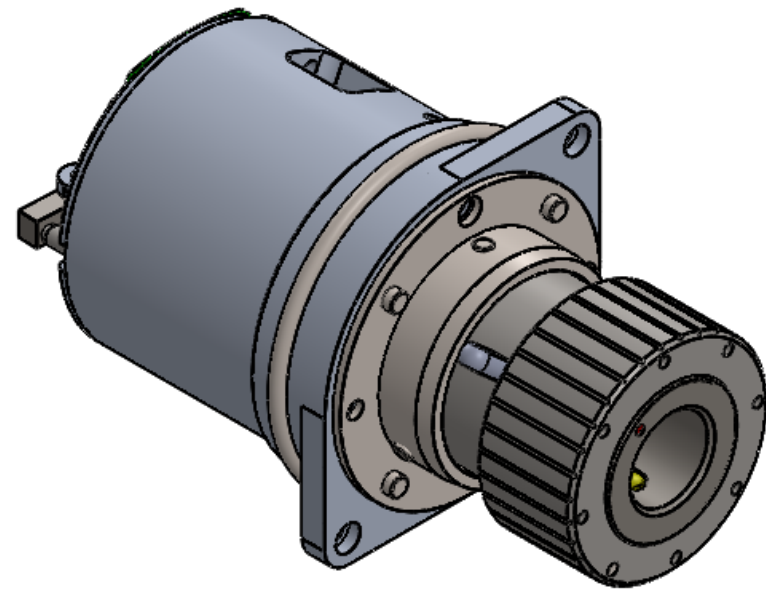
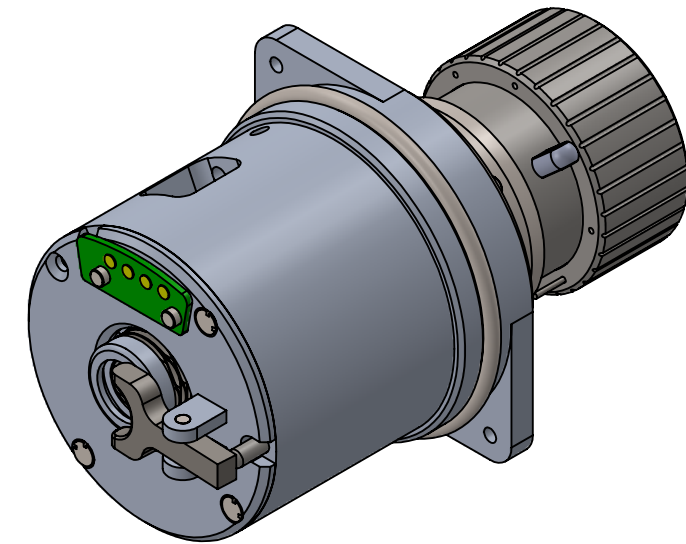
ASSEMBLY NOTES:

1. ALL SHARP CORNERS MUST BE DEBURRED.
2. ALL PARTS AND HARDWARE MUST BE CLEANED WITH ALCOHOL PRIOR TO ASSEMBLY.
3. USE ONLY NON-OUTGASING GREASE IN MOVING PARTS.
4. APPLY LOCTITE ADHISIVE TO SET SCREWS WHERE INDICATED.

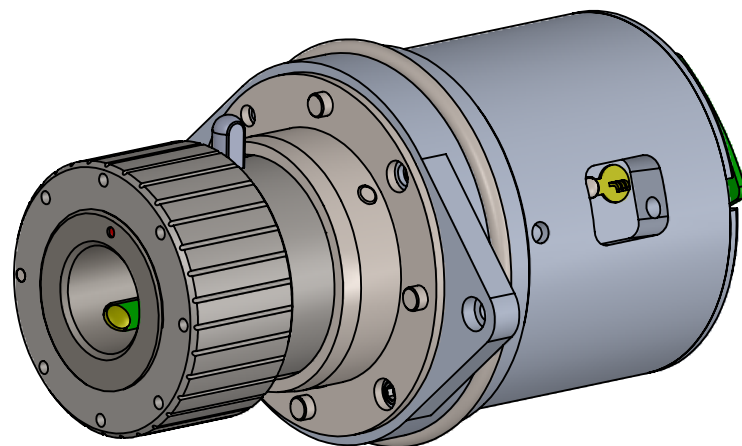
REVISIONS			
REV.	DESCRIPTION	DATE	APPROVED
1	INITIAL RELEASE	5/2/2014	ERS



SECTION A-A  
SCALE 1 : 1.5



SECTION B-B  
SCALE 1 : 1.5

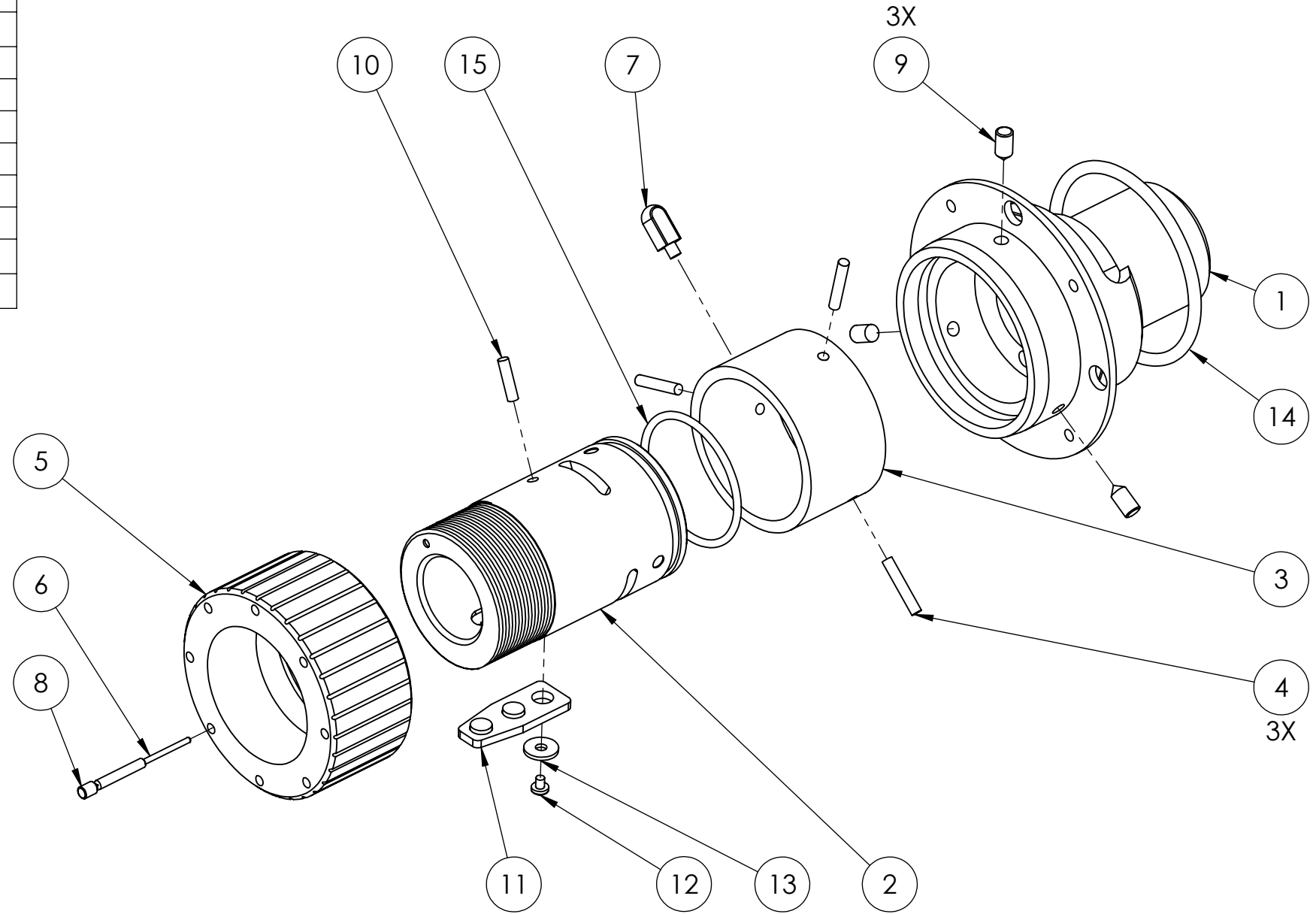
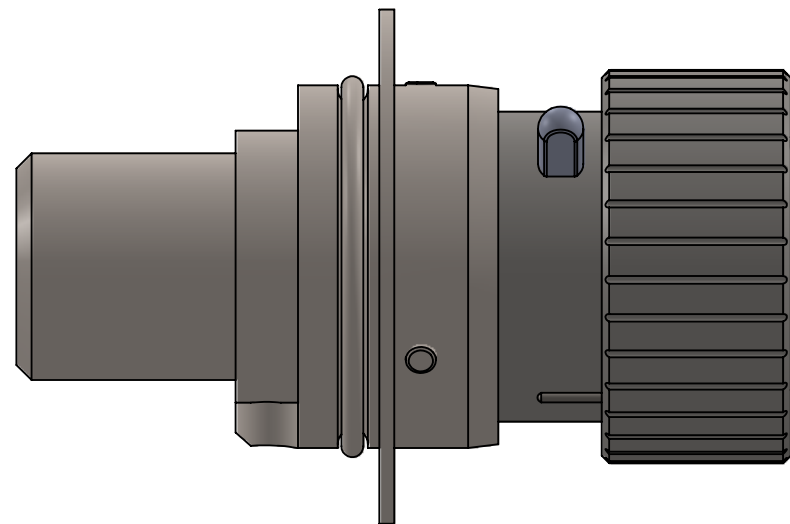
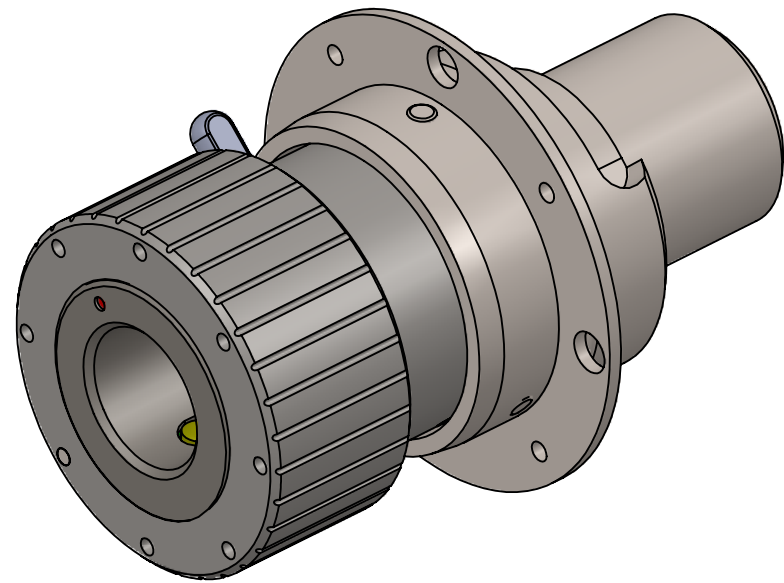


**PROPRIETARY AND CONFIDENTIAL**  
THE INFORMATION CONTAINED IN THIS DRAWING IS THE SOLE PROPERTY OF <INSERT COMPANY NAME HERE>. ANY REPRODUCTION IN PART OR AS A WHOLE WITHOUT THE WRITTEN PERMISSION OF <INSERT COMPANY NAME HERE> IS PROHIBITED.

UNLESS OTHERWISE SPECIFIED:		NAME	DATE	ESIERRA ENGINEERING
DIMENSIONS ARE IN MM[INCH]		DRAWN		
TOLERANCES:		CHECKED		SIZE DWG. NO. REV <b>B</b> A35-003400 1
FRACTIONAL ±		ENG APPR.		
ANGULAR: MACH ± BEND ±		MFG APPR.		
TWO PLACE DECIMAL ±0.25		Q.A.		
THREE PLACE DECIMAL ±0.12		COMMENTS:		
INTERPRET GEOMETRIC TOLERANCING PER:				
MATERIAL				
FINISH				
NEXT ASSY	USED ON			
APPLICATION		DO NOT SCALE DRAWING		

ITEM NO.	PART NUMBER	DESCRIPTION	QTY.
1	A45-992300	Bayonet Interlock Housing	1
2	A45-992301	Bayonet Interlock Collar	1
3	A45-992302	Bayonet Pin Holding Collar	1
4	91585A039	M2.5X14 Pin	3
5	A45-992303	Bayonet Tightening Collar	1
6	A45-992304	Tightening Lock Pin	1
7	A45-992305	Bayonet Locking Lever	1
8	91585A012	M3X5 Set Screw	1
9	92585A034	M4X8 Set Screw	3
10	93600A94	M2.5X10 Pin	1
11	B45-024567	PCB Comm. Probes	1
12	92567A034	M2 Pan Head Screw	1
13	91565A021	M2 Plain Washer	1
14	J515290x0446H	M44 ID O-Ring	1
15	J515178x0298H	29 ID O-Ring	1

REVISIONS			
REV.	DESCRIPTION	DATE	APPROVED
1	INITIAL RELEASE	5/2/2014	ERS



**PROPRIETARY AND CONFIDENTIAL**  
 THE INFORMATION CONTAINED IN THIS DRAWING IS THE SOLE PROPERTY OF <INSERT COMPANY NAME HERE>. ANY REPRODUCTION IN PART OR AS A WHOLE WITHOUT THE WRITTEN PERMISSION OF <INSERT COMPANY NAME HERE> IS PROHIBITED.

UNLESS OTHERWISE SPECIFIED:		NAME	DATE	ESIERRA ENGINEERING
DIMENSIONS ARE IN INCHES		DRAWN		
TOLERANCES:		CHECKED		BAYONET INTERLOCK
FRACTIONAL ±		ENG APPR.		
ANGULAR: MACH ±		MFG APPR.		<b>B</b> A35-016647 1
TWO PLACE DECIMAL ±0.25		Q.A.		SCALE: 1:2 WEIGHT: SHEET 1 OF 1
THREE PLACE DECIMAL ±0.12		COMMENTS:		
INTERPRET GEOMETRIC TOLERANCING PER:				
MATERIAL				
FINISH				
NEXT ASSY	USED ON			
APPLICATION				
DO NOT SCALE DRAWING				